

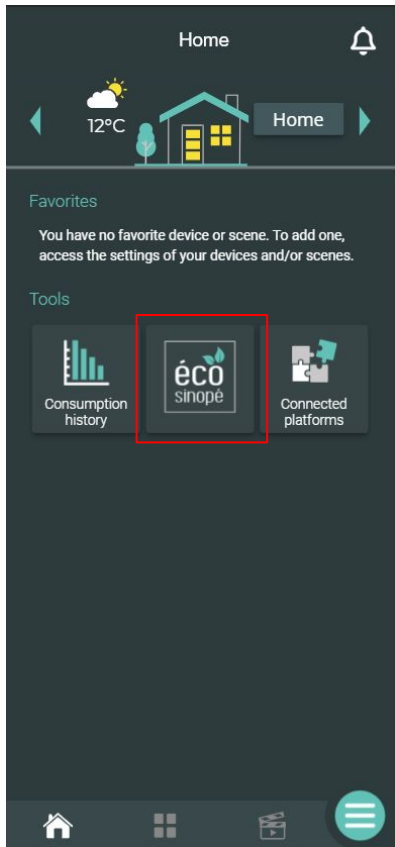


éco
sinopé

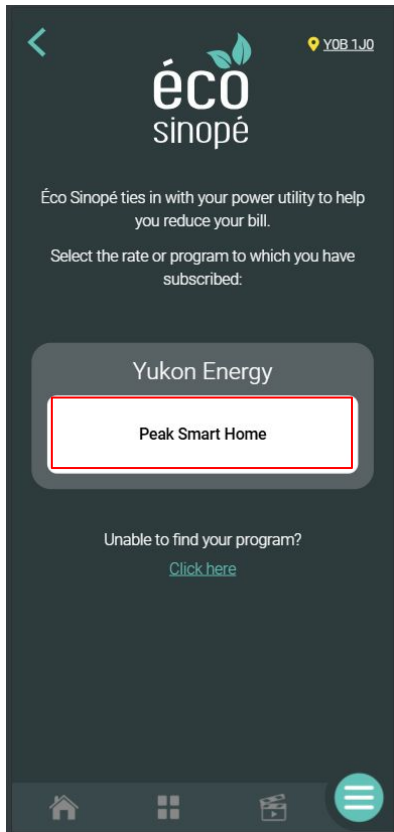
Enrollment process
Yukon Energy

sinopé

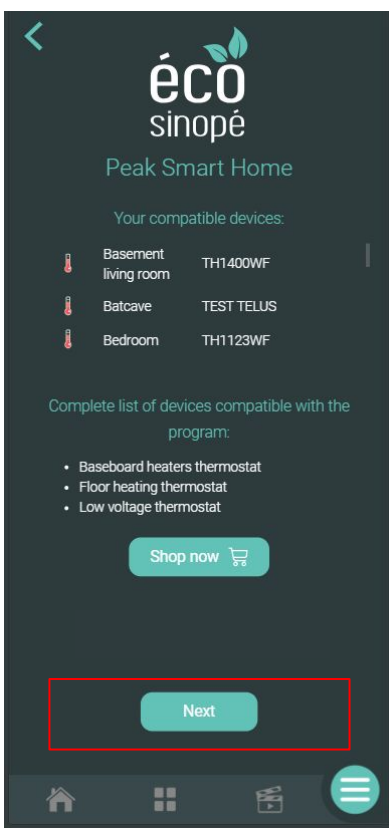
STEP 1



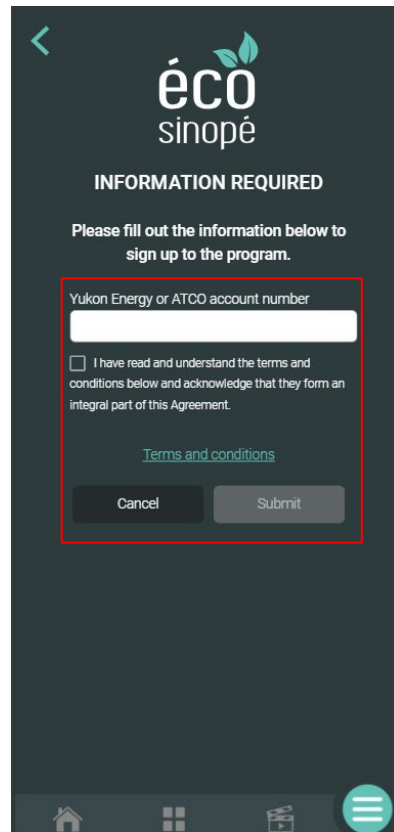
STEP 2



STEP 3

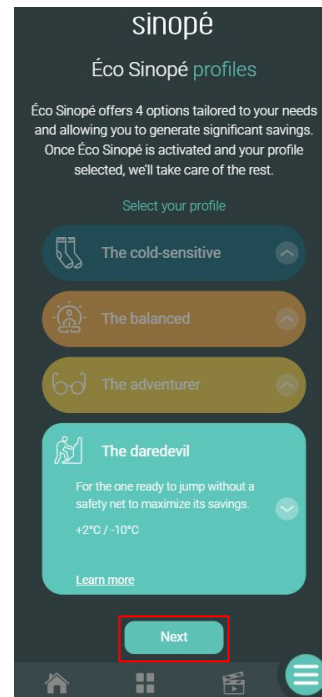
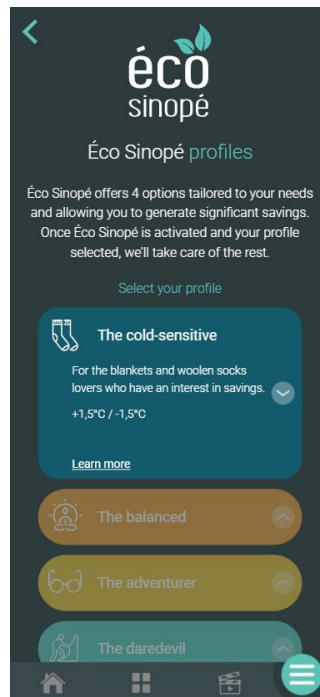
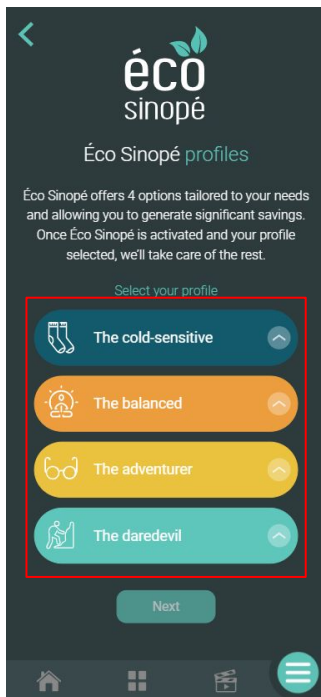


STEP 4



STEP 5

The user now selects the profile they want to use and they click Next.

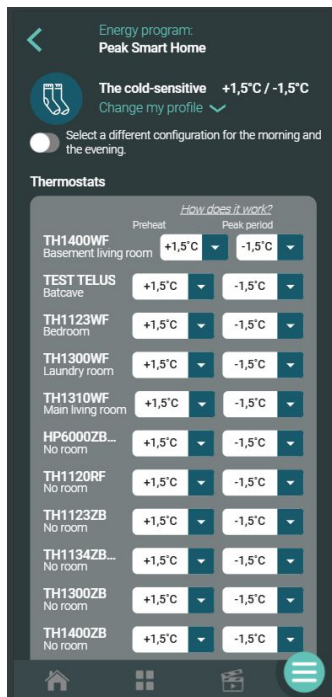


STEP 5

They can customize their profile.
When done, they click Save.

Thermostats: selection of the
adjustments for the preheat period
and the peak period

Load controllers: selection if the
device is participating or
non-participating.



DR event

The screenshot displays the inEvi web interface with a dark theme. At the top, a white banner reads "DR event". Below it, three panels are visible:

- Wall Dev:** Shows a temperature of 14°C and a "Home" button. A red box highlights an "Éco-Sinopé events" notification for Friday 04/14, stating: "Upcoming peak event 05:00 a.m. to 11:00 a.m." with sub-points for preheating and peak periods, and a "Learn more" button.
- Maison:** Shows a temperature of -14°C and a "Présent" button. It features a "Friday 04/14 peak event 05:00 a.m. to 11:00 a.m." notification with similar details and a "Learn more" button. Below this is a "Favoris" section with a grid of room temperature controls.
- TH1123ZB - Sans pièce:** Shows a temperature of 18.0°C. A red circle highlights an "éco +1.5" indicator. The "Chauffage" (Heating) control is set to "OFF".

The "Favoris" section in the Maison panel includes the following room controls:

Room	Temp	Mode
TH1123ZB Chambre Flore...	20.5	éco
TH1123ZB Chambre Julie...	20.5	éco
TH1123ZB Chambre Justi...	19.0	éco
TH1123WF Salon	22.0	éco
TH1123WF 2 Sous-sol	18.0	éco
TH1123WF 1 Sous-sol	18.0	éco
SW2500ZB Extérieur	OFF	Light
RM3500ZB Salle mécanique	OFF	Light